

Operating Guide

MCXD

How to log in with 4 digits

Summary

This guide describes step by step how to replace the standard 3-digit log in with a 4-digit log in for the MCXD software.

Description

Sometimes, for security reasons, a request for increasing the log-in digits from 3 to 4 arises.



The following approach is compatible with software made for using an MCDX ver.3 and 4:

1. Open the software with the latest version of MCXD
2. Edit the file InitDefines.c by enabling (deleting “//”) the define #define "ENABLE LOGIN 4DIGITS"

```

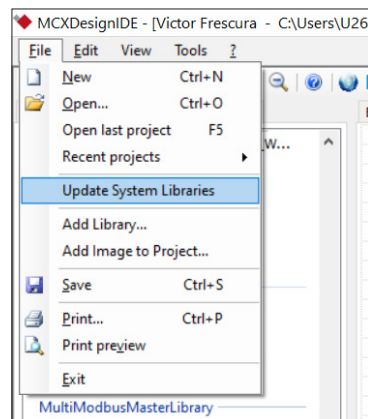
// Set number of history events (10 bytes in EEPROM for each event)
#define EVENT_HISTORY_MAX_EVENTS 20

//Enable login duration period (seconds)
#define SET_DELAY_TO_RESET_LOGIN 600

//Enable use of visibilities for menu items
#define ENABLE_ADDITIONAL_MENU_VISIBILITY

//Enable for 4 digits login-guide MCXD_How to login 4 digits
#define ENABLE_LOGIN_4DIGITS
    
```

Note: if the define ENABLE_LOGIN_4DIGITS is not reported in your initDefine.c file, update the system library from the menu file (this will refresh the InitDefine.c with the new defines).



3. Adjust the limits of the log-in parameters in the MCXS

GENERAL > PASSWORD				
L01	Password level 1	0	9999	100
L02	Password level 2	0	9999	200
L03	Password level 3	0	9999	300
UNIT CONFIG > TEMPERATURE CON...				
SP	Setpoint	-20.0	90.0	21.0