

Operating Guide

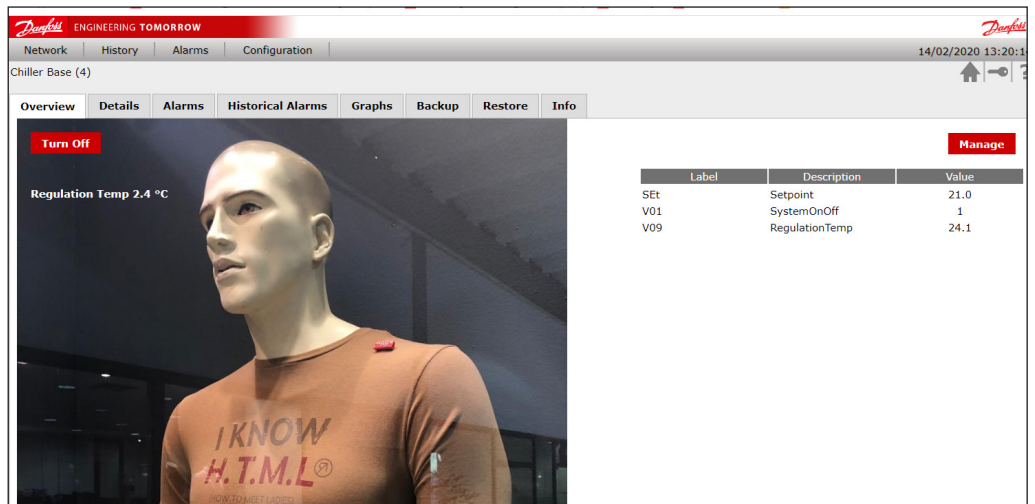
MCXWeb

How to set up the overview page

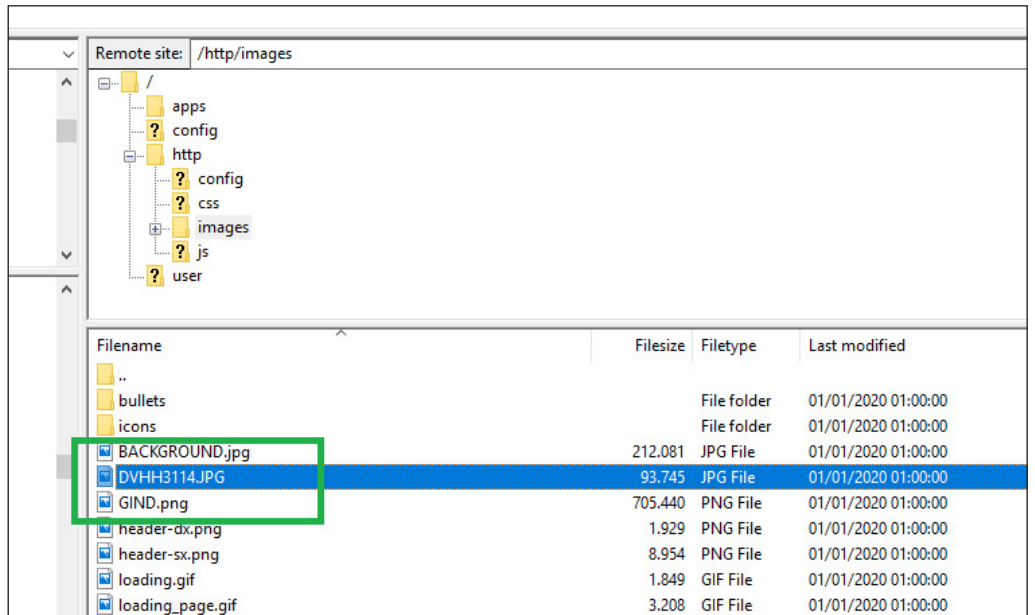
Summary

An additional web page can be added to the standard pages in order to share the main information quickly and easily. This page can be customised easily.

Description

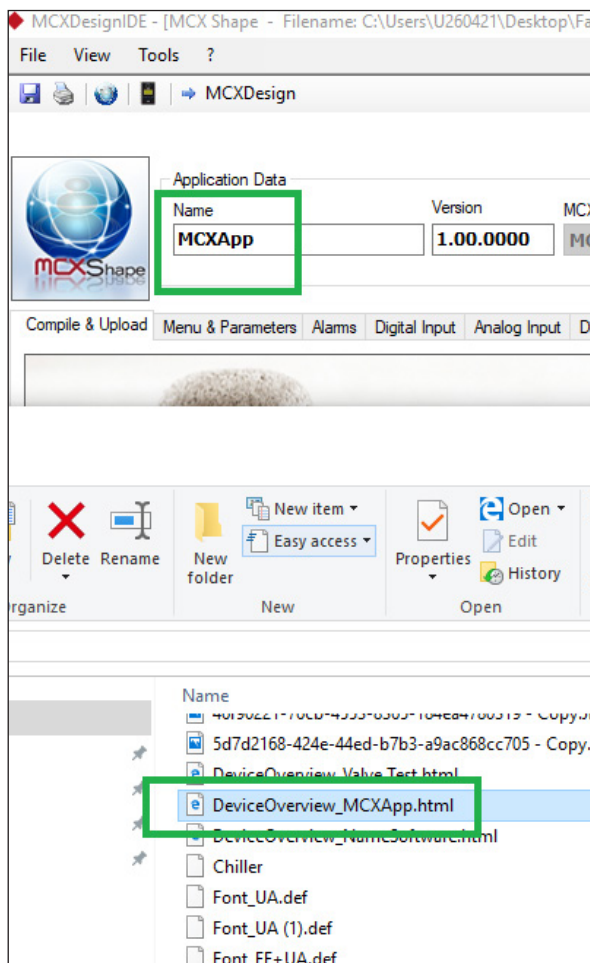


1. Save the overview image into the "http/Images" folder.



Note: Each MCX device in the CANBUS network can have an overview page and all the images (if different) must be located in the "http/Images" folder.

- Rename the linked web page "DeviceOverview_NameSoftware.html" by giving the part "NameSoftware" the name of the software you are using.



- Open the .html file using a text editor and upgrade the image's name in the line shown below.

```

383
384 //          POS X, POS Y, CLASS, TEXT SX, TEXT DX, PARAMETER NAME, NUM. OF DE
385 AddLabel(100, 100, "div_green", "Regulation Temp ", " °C", "RegulationTemp
386 //          POS X, POS Y, CLASS, TEXT ON, TEXT OFF, PARAMETER NAME
387 AddButton(200, 200, "ui-button ui-widget ui-state-default ui-corner-all",
388 </script>
389
390 <div id="wait" style="width: 100%;">
391
392 <div id="popup_dialog" title="Overview">
393 <br>
394 <br>
395 <p id="popup_dialog_text"><p>
396 <br>
397 <br>
398 </div>
399
400 <div id="tabs" style="display:none; width:auto; padding: 4px;">
401 <ul>
402 <li><a href="#tab-1">Overview</a></li>
403 <li><a href="#tab-2">Details</a></li>
404 <li><a href="#tab-3">Alarms</a></li>
405 <li mcx:hide="(getHistoricalAlarmEnabled() == 0)"><a href="#tab-4">H
406 <li><a href="#tab-5">Graphs</a></li>
407 <li mcx:hide="(MCXWeb.GetAuthorization() < 1)"><a href="#tab-6">Backu
408 <li mcx:hide="(MCXWeb.GetAuthorization() < 1)"><a href="#tab-7">Resto
409 <li><a href="#tab-8">Info</a></li>
410 </ul>
411
412 <div id="tab-1" style="min-height:1000px;">
413 <div style="display: block; float: left;">
414 <div id="image_container" style="position:relative; top:0px; left:
415 <center>
416 
417

```

4. Display variables over the image by editing:
 - a. The style of the label

```

1 <style>
2 .table_selected_par_scroll {
3     margin:0px;
4     padding:0px;
5     height:200px;
6     overflow-x:hidden;
7     overflow-y:auto;"
8 }
9
10 .div_green {color:black; font-weight: bold; font-size:15px;}
11 </style>
    
```

- b. The position, additional text info plus which variable

The screenshot shows the MCXDesign interface. On the left, a 'Chiller Base (4)' overview is displayed with a 'Turn Off' button and a 'Regulation Temp 2.4 °C' label. On the right, a table lists variables:

Label	Description	Variable Name	History	Copy Type
V03	AlmPump	AlmPump	<input type="checkbox"/>	Copy
V04	StartPump	StartPump	<input type="checkbox"/>	Copy
V07	AlmFlow	AlmFlow	<input type="checkbox"/>	Copy
V08	Loop Time	Loop Time	<input type="checkbox"/>	Copy
V09	Regulation Temp	Regulation Temp	<input checked="" type="checkbox"/>	Copy
V10	AlmRegulation Temp	AlmRegulation Temp	<input type="checkbox"/>	Copy
V11	PowerRequest	PowerRequest	<input type="checkbox"/>	Copy

Below the table, a code editor shows the following JavaScript code:

```

379     text += "</div>";
380
381     $("#image_container").append(text);
382 };
383
384 //      POS X, POS Y, CLASS, TEXT SX, TEXT DX, PARAMETER NAME, NUM. OF DECIMALS
385 AddLabel(20, 100, "div_green", "Regulation Temp ", " °C", "RegulationTemp", 1);
386 //      POS X, POS Y, CLASS, TEXT ON, TEXT OFF, PARAMETER NAME
387 AddButton(20, 20, "ui-button ui-widget ui-state-default ui-corner-all", "Turn On",
388 script>
    
```

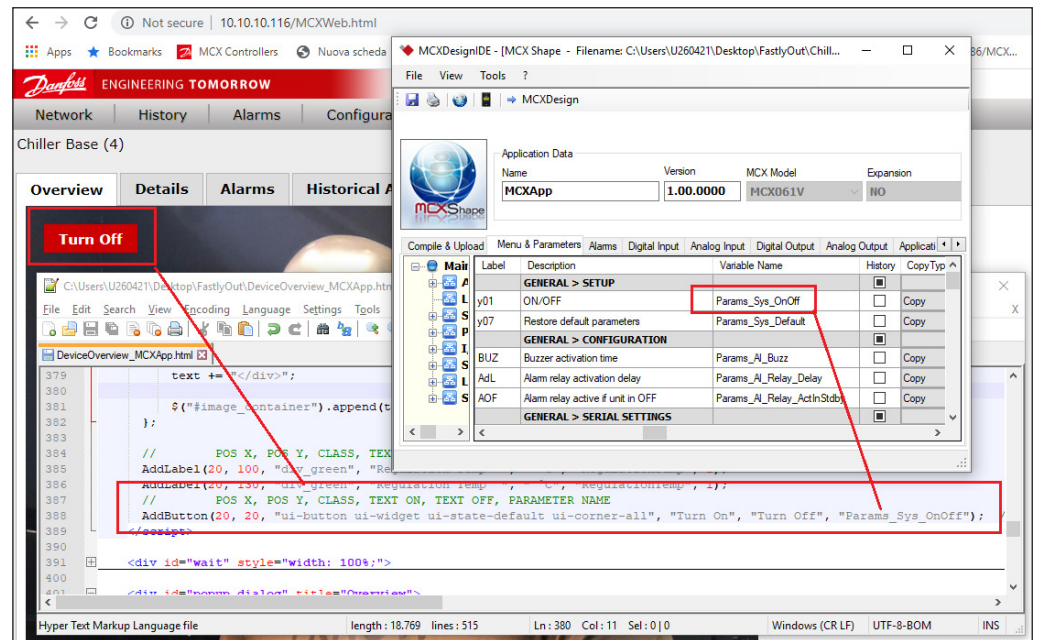
Note: for displaying more variables, just duplicate the line.

The screenshot shows the MCXDesign interface with the 'Regulation Temp 2.4 °C' label duplicated. The code editor now shows two 'AddLabel' lines:

```

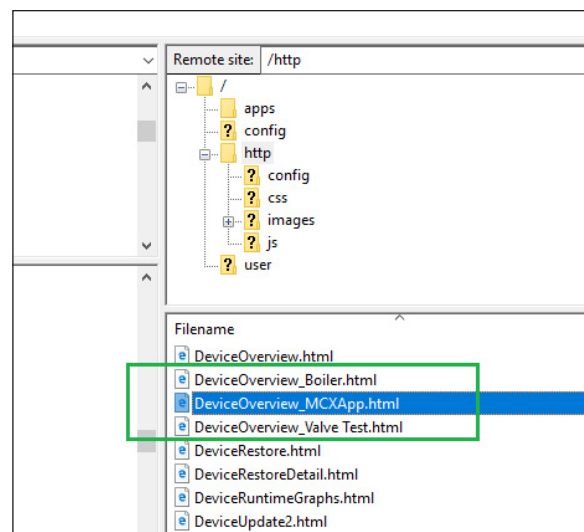
385 AddLabel(20, 100, "div_green", "Regulation Temp ", " °C", "RegulationTemp", 1);
386 AddLabel(20, 130, "div_green", "Regulation Temp ", " °C", "RegulationTemp", 1);
    
```

5. Adding buttons by editing as shown below:



Note: for displaying more buttons, just duplicate the line.

6. Save the .html file in the "http" folder



Note: the fitting of the writings could require a bit of testing.