

Operating Guide

MCXS

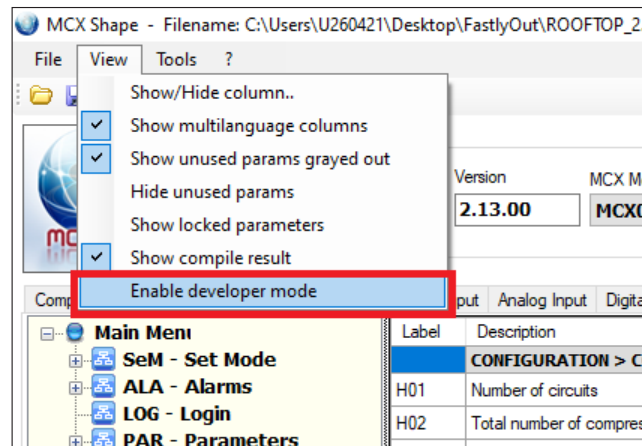
How to add a language

Summary

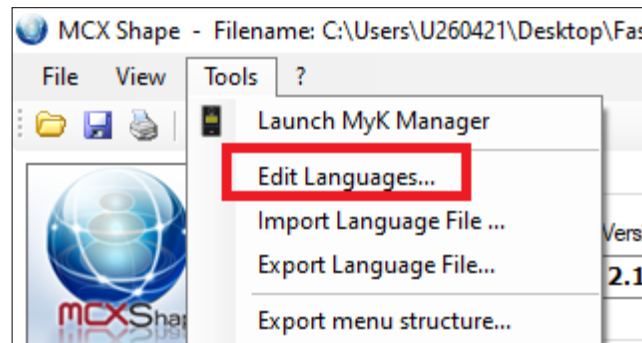
MCXShape allows adding new languages to the available one. The procedure is quite easy and is explained below.

Description

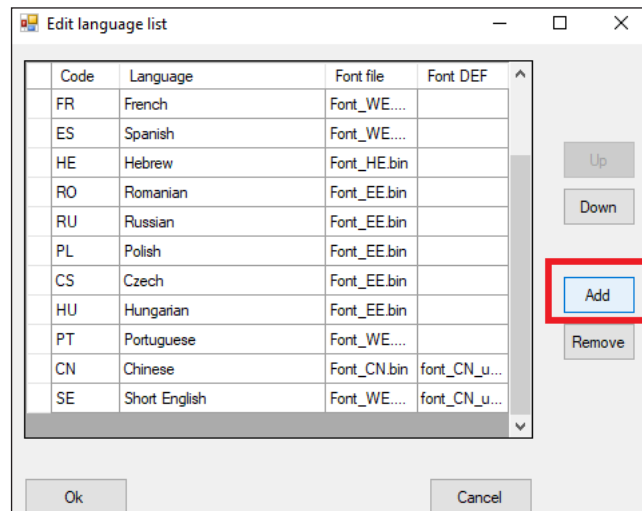
1. Enable developer mode from the menu "View":



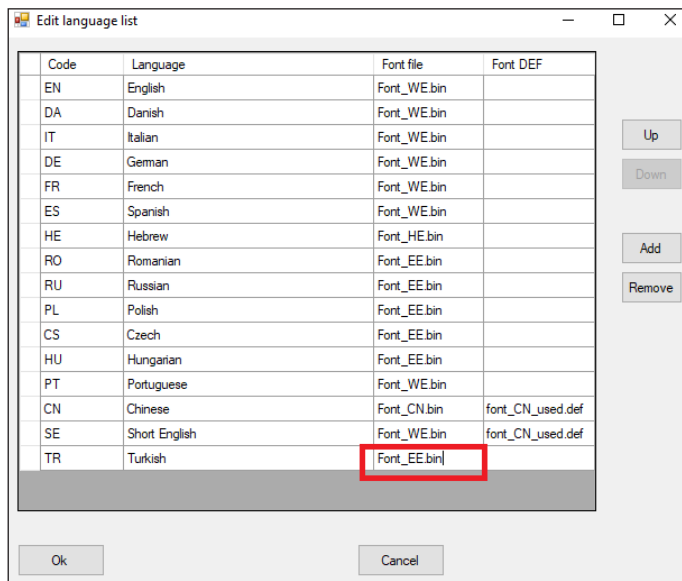
2. Edit Languages from the menu "Tools":



3. Add new languages:



4. Type the "Font" that will be used for the language:
The ones available are in the folder "bin". By opening them with a text editor, you can check the characters inside



5. Save the changes with the button "OK":



Note: now there will be an additional column containing the new language.

7. The "Out Code" must be set in such an order that it will be consecutive with the previous menu:

Menu settings ID 755

Label:

Description:

Level:

Enabled:

Out Code:

Variable Name:

Functionality:

Visibility:

Languages Refresh Languages

Language	Description
English	Turkish
Danish	
Italian	
German	
French	
Spanish	
Hebrew	
Romanian	
Russian	
Polish	

Application Data

Name:

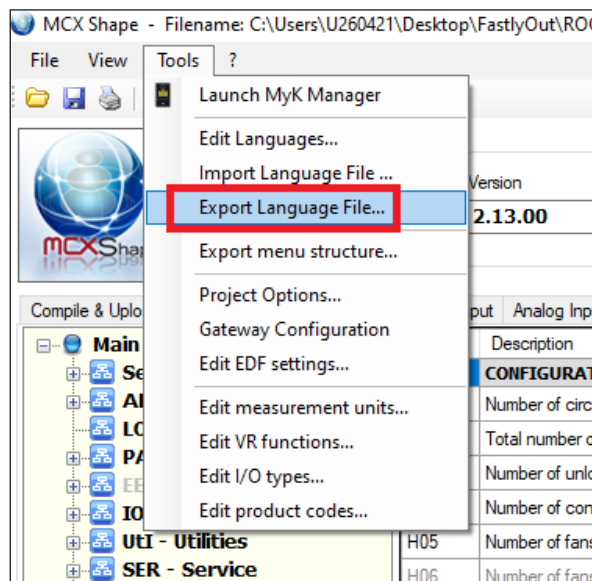
Compile & Upload
Menu & Parameters
Alarms
Digital In

Main Menu

- SeM - Set Mode
- ALA - Alarms
- LOG - Login
- PAR - Parameters
- EEV - Config EEV
- IO - Input/Output
- UTI - Utilities
- SER - Service
- LNG - Language
 - EN - English
 - DA - Danish
 - IT - Italian
 - DE - German
 - FR - French
 - ES - Spanish
 - HE - Hebrew
 - RO - Romanian
 - RU - Russian
 - PL - Polish
 - CS - Czech
 - HU - Hungarian ...
 - PT - Portuguese **183**
 - CN - Chinese 184**
 - TU - Turkish **185**
- STV - Status var

Label
H01
H02
H03
H04
H05
H06
H11
H07
H08
H09
H10
dSC
CF1
CF2
CF3
CF4
CF5

8. Export Language File from the menu "Tools":



9. Fulfill the translation in the file export_lang.XLS

10. Import language file from the menu "Tools":

